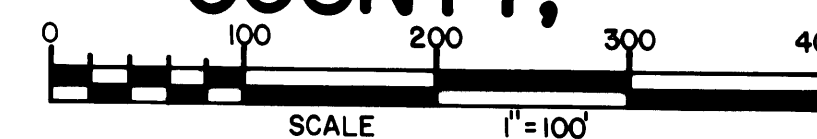


CURVE DATA				
A Δ= 89°59'38" R= 25.00' LA= 39.27' T= 25.00'	B Δ= 90°00'22" R= 25.00' LA= 39.27' T= 25.00'	C Δ= 81°01'37" R= 25.00' LA= 35.35' T= 21.36'	D Δ= 25°38'04" R= 200.61' LA= 89.75' T= 45.64'	E Δ= 25°38'04" R= 225.61' LA= 100.94' T= 51.33'
F Δ= 25°38'04" R= 175.61' LA= 78.57' T= 39.95'	G Δ= 90°00'00" R= 25.00' LA= 39.27' T= 25.00'	H Δ= 90°00'00" R= 75.00' LA= 117.81' T= 75.00'	I Δ= 90°00'00" R= 100.00' LA= 157.08' T= 100.00'	J Δ= 90°00'00" R= 125.00' LA= 196.35' T= 125.00'
K Δ= 60°00'00" R= 50.00' LA= 52.36'	L Δ= 48°11'23" R= 50.00' LA= 42.05'	M Δ= 48°11'23" R= 25.00' LA= 21.03'	N Δ= 0°42'53" R= 5599.58' LA= 69.85'	O Δ= 1°08'09" R= 5599.58' LA= 111.01'
P Δ= 1°01'48" R= 5599.58' LA= 100.66'	Q Δ= 1°01'41" R= 5599.58' LA= 100.47'	R Δ= 1°01'36" R= 5599.58' LA= 100.34'	S	T

EASTRIDGE ESTATES

MARTIN COUNTY, FLORIDA



SHEET 2 OF 2 SHEETS

OCTOBER 1977

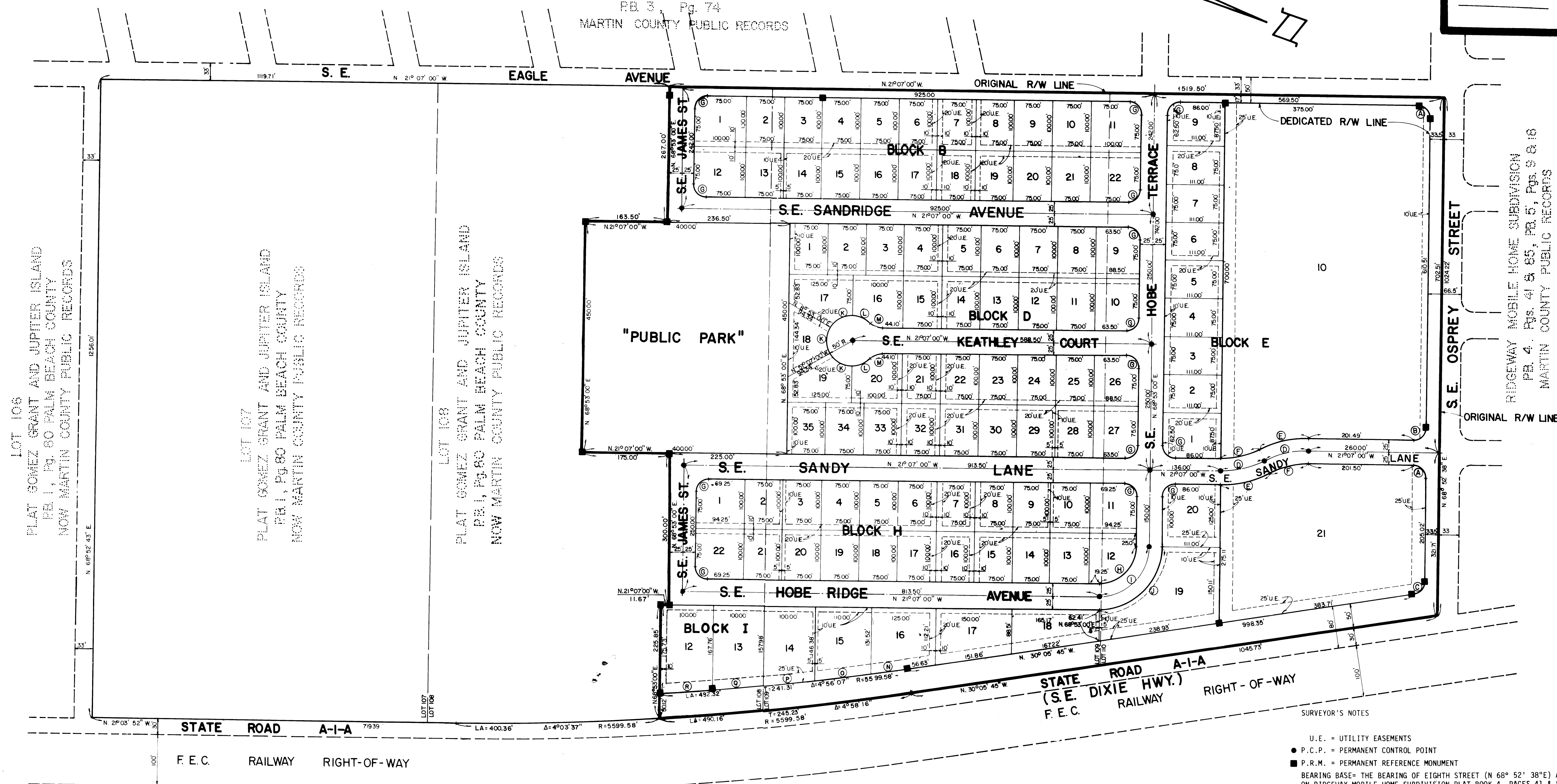
I, LOUISE V. ISAACS, COUNTY CLERK OF MARTIN COUNTY, FLORIDA, HEREBY CERTIFY THAT THIS PLAT HAS BEEN EXAMINED AND THAT IT COMPLIES IN FORM WITH ALL THE REQUIREMENTS OF THE STATUTES OF FLORIDA PERTAINING TO MAPS AND PLATS, AND THAT THIS PLAT HAS BEEN FILED FOR RECORD IN PLAT BOOK 7, PAGE 27, PUBLIC RECORDS OF MARTIN COUNTY, FLORIDA, THIS DAY OF _____, A.D. 1977.

LOUISE V. ISAACS, CLERK
MARTIN COUNTY, FLORIDA

BY _____

FILE NO. _____

HOBE HEIGHTS SUBDIVISION
PB 3, PG. 74
MARTIN COUNTY PUBLIC RECORDS



LOT 106
PLAT GOMEZ GRANT AND JUPITER ISLAND
PB 1, PG. 80 PALM BEACH COUNTY
NOW MARTIN COUNTY PUBLIC RECORDS

LOT 107
PLAT GOMEZ GRANT AND JUPITER ISLAND
PB 1, PG. 80 PALM BEACH COUNTY
NOW MARTIN COUNTY PUBLIC RECORDS

LOT 108
PLAT GOMEZ GRANT AND JUPITER ISLAND
PB 1, PG. 80 PALM BEACH COUNTY
NOW MARTIN COUNTY PUBLIC RECORDS

RIDGEWAY MOBILE HOME SUBDIVISION
PB 4, PGS. 41 & 85, PG. 5, PG. 9 & 18
MARTIN COUNTY PUBLIC RECORDS

U.E. = UTILITY EASEMENTS
 ● P.C.P. = PERMANENT CONTROL POINT
 ■ P.R.M. = PERMANENT REFERENCE MONUMENT
 BEARING BASE= THE BEARING OF EIGHTH STREET (N 68° 52' 38"E) AS SHOWN ON RIDGEWAY MOBILE HOME SUBDIVISION PLAT BOOK 4, PAGES 41 & 85, PLAT BOOK 5, PAGES 9 & 18, PUBLIC RECORDS OF MARTIN COUNTY, FLORIDA.

GOMEZ GRANT AND JUPITER ISLAND
PLAT BOOK 1, PAGE 80 PALM BEACH
COUNTY NOW MARTIN COUNTY PUBLIC
RECORDS

LINDAHL, BROWNING & FERRARI, INC. CONSULTING ENGINEERS, PLANNERS & SURVEYORS		SHEET	OF
		2	2